

## STRADELLA-IP-64-HB-S

~30° spot beam.

### TECHNICAL SPECIFICATIONS:

Dimensions	74.0 x 253.0 mm
Height	9.2 mm
Fastening	screw
Ingress protection classes	IP67
ROHS compliant	yes ⓘ

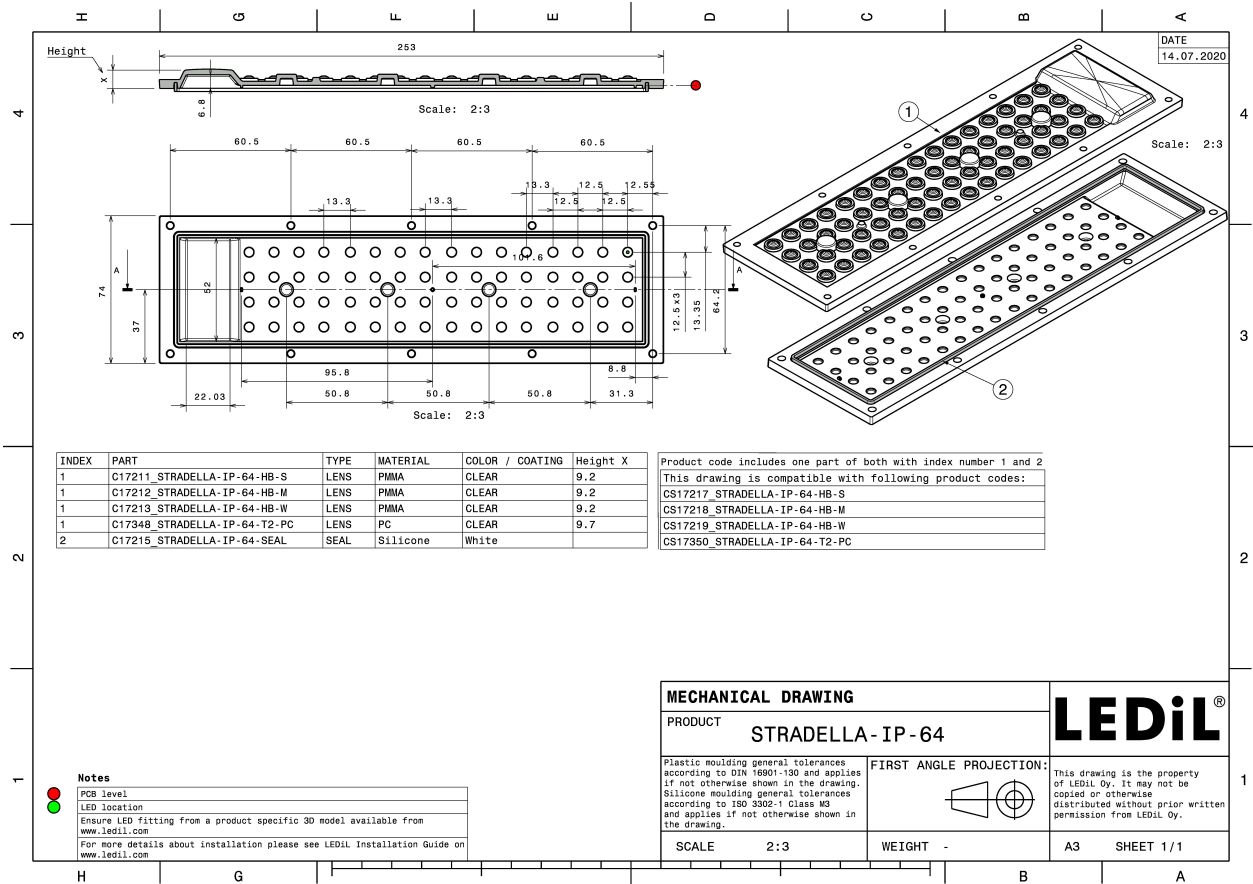
### MATERIAL SPECIFICATIONS:

Component	Type	Material	Colour	Finish
STRADELLA-IP-64-HB-S	Multi-lens	PMMA	clear	
STRADELLA-IP-64-SEAL	Seal	Silicone	milky	

### ORDERING INFORMATION:

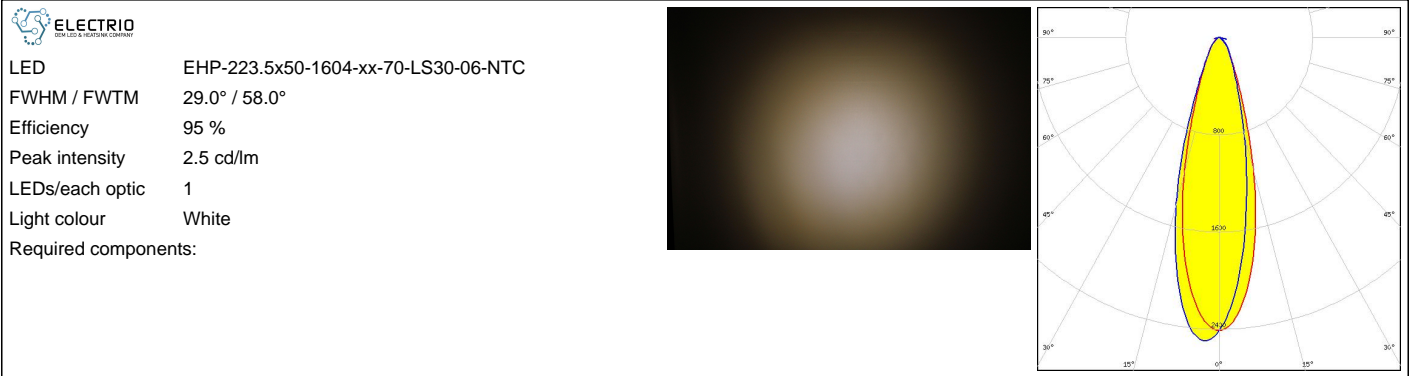
Component	Type	Qty in box	MOQ	MPQ	Box weight (kg)
CS17217_STRADELLA-IP-64-HB-S » Box size: 476 x 273 x 247 mm	Multi-lens	108	108	36	9.1





See also our general installation guide: [www.ledil.com/installation\\_guide](http://www.ledil.com/installation_guide)

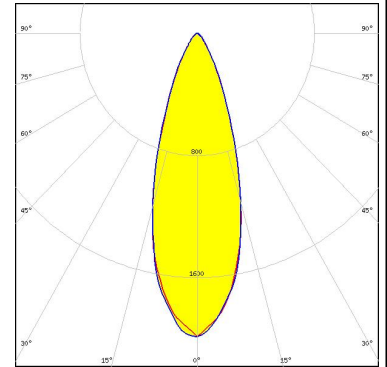
#### PHOTOMETRIC DATA (MEASURED):



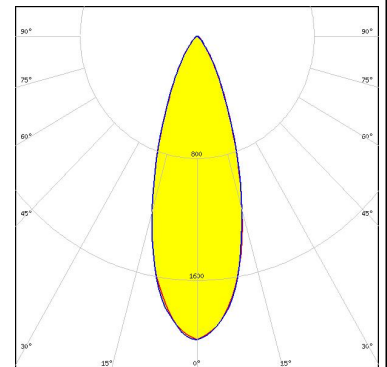
#### PHOTOMETRIC DATA (SIMULATED):



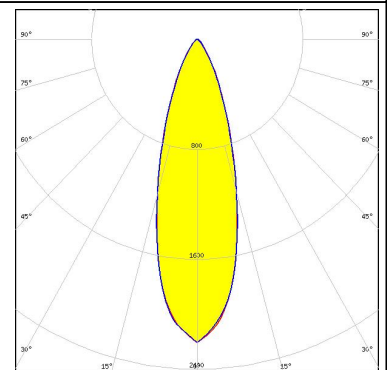
LED J Series 3030  
 FWHM / FWTM 34.0° / 64.0°  
 Efficiency 90 %  
 Peak intensity 2 cd/lm  
 LEDs/each optic 1  
 Light colour White  
 Required components:



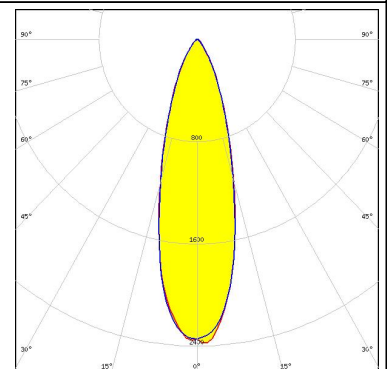
LED LUXEON 3030 HE Plus  
 FWHM / FWTM 34.0° / 66.0°  
 Efficiency 90 %  
 Peak intensity 2 cd/lm  
 LEDs/each optic 1  
 Light colour White  
 Required components:



LED Duris E 2835  
 FWHM / FWTM 32.0° / 64.0°  
 Efficiency 92 %  
 Peak intensity 2.2 cd/lm  
 LEDs/each optic 1  
 Light colour White  
 Required components:



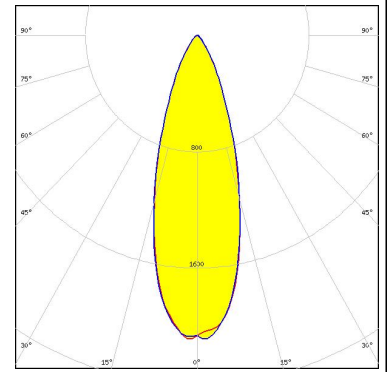
LED Duris S5 (Single chip)  
 FWHM / FWTM 30.0° / 63.0°  
 Efficiency 92 %  
 Peak intensity 2.4 cd/lm  
 LEDs/each optic 1  
 Light colour White  
 Required components:



#### PHOTOMETRIC DATA (SIMULATED):

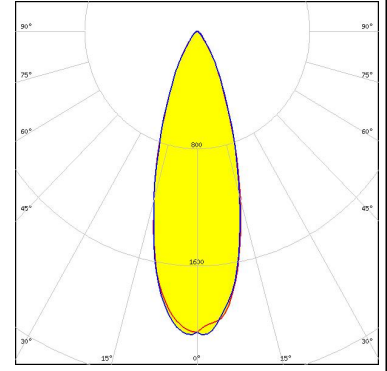
#### PHILIPS

LED Fortimo FastFlex LED 4x16 DHE G4  
 FWHM / FWTM 34.0° / 64.0°  
 Efficiency 91 %  
 Peak intensity 2.1 cd/lm  
 LEDs/each optic 1  
 Light colour White  
 Required components:



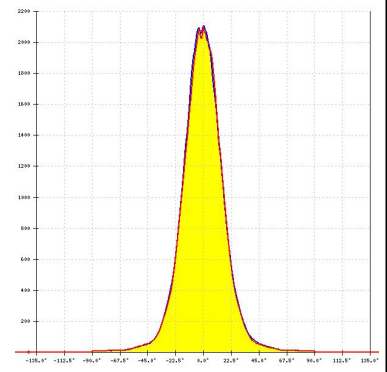
#### SAMSUNG

LED HiLOM RM64 (LM301B)  
 FWHM / FWTM 34.0° / 66.0°  
 Efficiency 91 %  
 Peak intensity 2.1 cd/lm  
 LEDs/each optic 1  
 Light colour White  
 Required components:



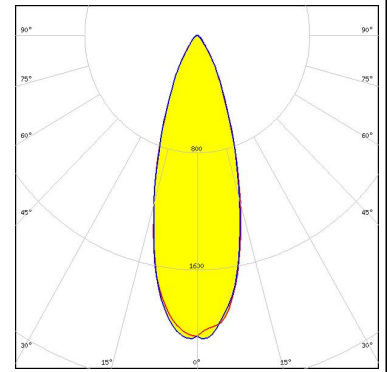
#### SAMSUNG

LED LM301B  
 FWHM / FWTM 33.0° / 65.0°  
 Efficiency 93 %  
 Peak intensity 2.2 cd/lm  
 LEDs/each optic 1  
 Light colour White  
 Required components:



#### SAMSUNG

LED LM301B  
 FWHM / FWTM 34.0° / 66.0°  
 Efficiency 91 %  
 Peak intensity 2.1 cd/lm  
 LEDs/each optic 1  
 Light colour White  
 Required components:



#### PHOTOMETRIC DATA (SIMULATED):

<p><b>SEOUL</b> SEOUL SEMICONDUCTOR</p> <p>LED: SEOUL 3030            FWHM / FWTM: 34.0° / 66.0°            Efficiency: 93 %            Peak intensity: 2.1 cd/lm            LEDs/each optic: 1            Light colour: White            Required components:</p>	
<p><b>SEOUL</b> SEOUL SEMICONDUCTOR</p> <p>LED: SEOUL DC 3528            FWHM / FWTM: 35.0° / 68.0°            Efficiency: 92 %            Peak intensity: 1.9 cd/lm            LEDs/each optic: 1            Light colour: White            Required components:</p>	
<p><b>TRIDONIC</b></p> <p>LED: RLE 4x16 4000lm MP ADV2 OTD            FWHM / FWTM: 34.0° / 66.0°            Efficiency: 91 %            Peak intensity: 2.1 cd/lm            LEDs/each optic: 1            Light colour: White            Required components:</p>	

#### GENERAL INFORMATION:

NOTE: The typical beam angle will be changed by different color, chip size and chip position tolerance. The typical total beam angle is the full angle measured where the luminous intensity is half of the peak value.

#### MATERIALS:

As part of our continuous research and improvement processes, and to ensure the best possible quality and availability of our products, LEDiL reserves the right to change material grades without notice.

#### PRODUCT DATA USER AGREEMENT AND DISCLAIMER:

The measured data in the provided downloadable LEDiL Product Datasheets and Mechanical 2D-Drawings is rounded and provided as reference for planning. LEDiL Oy's optical specifications have been verified by conducting performance testing of the products in accordance with the company's quality system. The reported data are averaged results of multiple measurements with typical variation. LEDiL Oy reserves the right to without prior notification make changes and improvements to its products.

LEDiL Oy assumes neither warranty, nor guarantee nor any other liability of any kind for the contents and correctness of the provided data. The provided data has been generated with highest diligence but the provided data may in reality not represent the complete possible variation range of all intrinsic parameters. Therefore, in certain cases a deviation from the provided data could occur.

LEDiL Oy reserves the right to undertake technical changes of its products without further notification which could lead to changes in the provided data. LEDiL Oy assumes no liability of any kind for the possible deviation from any provided data or any other damage resulting from the usage of the provided data.

The user agrees to this disclaimer and user agreement with the download or usage of the provided files.

#### LEDiL Oy

Joensuunkatu 13  
FI-24240 SALO  
Finland

#### LEDiL Inc.

228 West Page Street  
Suite D  
Sycamore IL 60178  
USA

#### Ledil Optics Technology (Shenzhen) Co., Ltd.

# 405 , Block B  
Casic Motor Building  
Shenzhen 518057  
P.R.CHINA

#### Local sales and technical support

[www.ledil.com/  
where\\_to\\_buy](http://www.ledil.com/where_to_buy)

#### Shipping locations

Salo, Finland  
Hong Kong, China

#### Distribution Partners

[www.ledil.com/  
where\\_to\\_buy](http://www.ledil.com/where_to_buy)