

VIOLET-12X1-S

~20° wide beam when used with one UV LED

TECHNICAL SPECIFICATIONS:

Dimensions	294.8 x 41.6 mm
Height	8.8 mm
Fastening	screw
Ingress protection classes	IP67
ROHS compliant	yes ⓘ

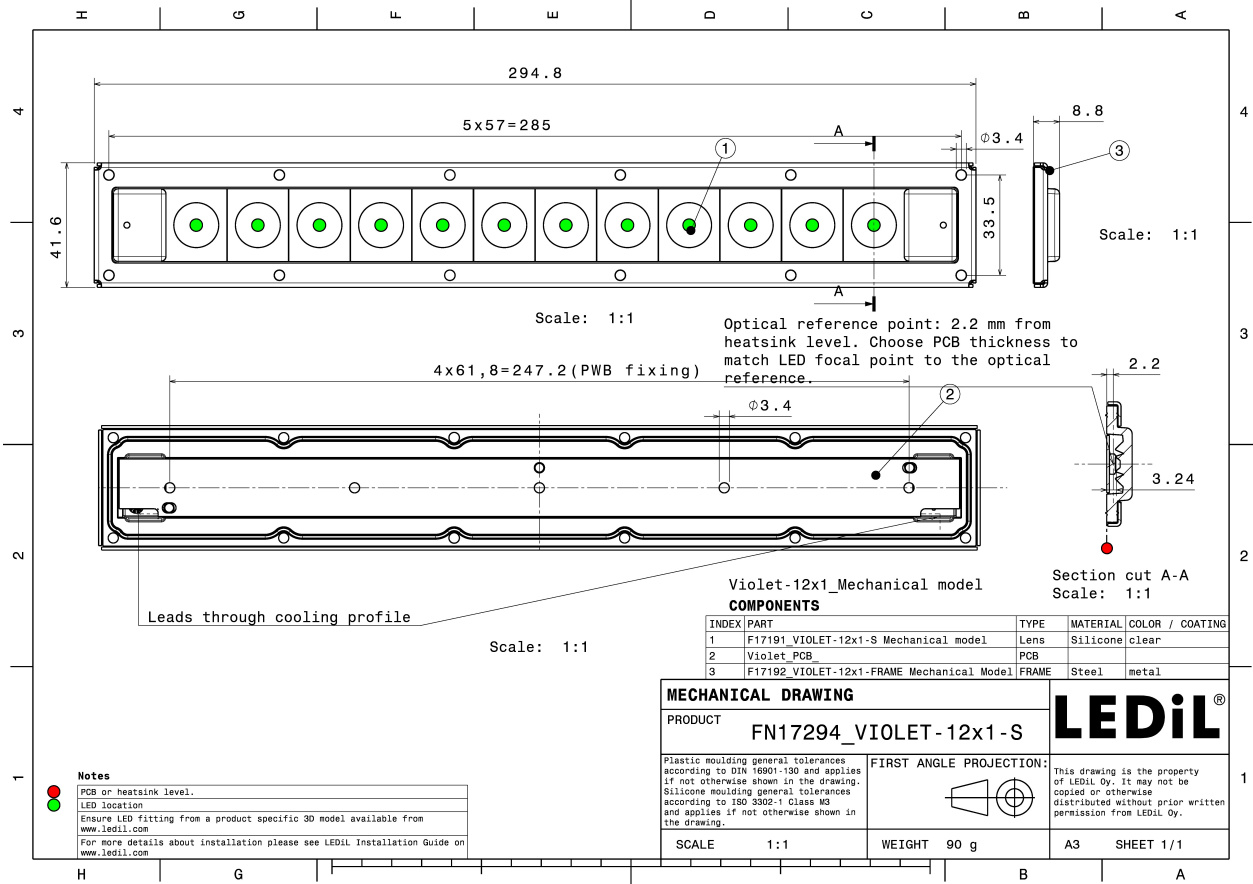
MATERIAL SPECIFICATIONS:

Component	Type	Material	Colour	Finish
VIOLET-12X1-S	Multi-lens	Silicone	clear	
VIOLET-12X1-FRAME	Accessory	Stainless steel	metal	



ORDERING INFORMATION:

Component	Type	Qty in box	MOQ	MPQ	Box weight (kg)
FN17294_VIOLET-12X1-S » Box size: 398 x 298 x 150 mm	Multi-lens	78	26	26	7.7



See also our general installation guide: www.ledil.com/installation_guide

PHOTOMETRIC DATA (MEASURED):



LED LIGHT ENGINE VIOLET UVC 281x19.2mm (KL265-50V-SM-WD)
FWHM / FWTM 16.0° / 43.0°
Efficiency 55 %
LEDs/each optic 1
Light colour UV-C
Required components:

The UVC LED result tolerance is ± 10 %

Crystal[®]IS

LED KL265-50V-SM-WD
FWHM / FWTM 23.0° / 51.0°
Efficiency 54 %
LEDs/each optic 1
Light colour UV-C
Required components:

The UVC LED result tolerance is ± 10 %



LED 110384-GC VIOLET
FWHM / FWTM 24.0° / 65.0°
Efficiency 69 %
LEDs/each optic 1
Light colour UV-C
Required components:

The UVC LED result tolerance is ± 10 %



LED 110384-GM VIOLET
FWHM / FWTM 47.0° / 74.0°
Efficiency 70 %
LEDs/each optic 1
Light colour UV-C
Required components:

The UVC LED result tolerance is ± 10 %

PHOTOMETRIC DATA (MEASURED):

LITEON

LED LTPL-G35UV275GC-E
FWHM / FWTM 15.0° / 46.0°
Efficiency 63 %
LEDs/each optic 1
Light colour UV-C
Required components:

The UVC LED result tolerance is ± 10 %

LITEON

LED LTPL-G35UV275GR-E
FWHM / FWTM 21.0° / 50.0°
Efficiency 63 %
LEDs/each optic 1
Light colour UV-C
Required components:

The UVC LED result tolerance is ± 10 %

LITEON

LED LTPL-G35UVC275GH
FWHM / FWTM 26.0° / 54.0°
Efficiency 61 %
LEDs/each optic 1
Light colour UV-C
Required components:

The UVC LED result tolerance is ± 10 %

LITEON

LED LTPL-G35UVC275GZ
FWHM / FWTM 28.0° / 53.0°
Efficiency 62 %
LEDs/each optic 1
Light colour UV-C
Required components:

The UVC LED result tolerance is ± 10 %

PHOTOMETRIC DATA (MEASURED):



LED XBT-3535-UV
FWHM / FWTM 32.0° / 60.0°
Efficiency 64 %
LEDs/each optic 1
Light colour UV-C
Required components:

The UVC LED result tolerance is ± 10 %



LED XFM-5050 2 Die
FWHM / FWTM 32.0° / 59.0°
Efficiency 57 %
LEDs/each optic 1
Light colour UV-C
Required components:

The UVC LED result tolerance is ± 10 %



LED XFM-5050 3 Die
FWHM / FWTM 28.0° / 55.0°
Efficiency 51 %
LEDs/each optic 1
Light colour UV-C
Required components:

The UVC LED result tolerance is ± 10 %



LED XST-3535-UV
FWHM / FWTM 23.0° / 51.0°
Efficiency 62 %
LEDs/each optic 1
Light colour UV-C
Required components:

The UVC LED result tolerance is ± 10 %

PHOTOMETRIC DATA (MEASURED):



LED NCSU334A
FWHM / FWTM 23.0° / 52.0°
Efficiency 64 %
LEDs/each optic 1
Light colour UV-C
Required components:

The UVC LED result tolerance is ± 10 %



LED NCSU334B
FWHM / FWTM 26.0° / 51.0°
Efficiency 61 %
LEDs/each optic 1
Light colour UV-C
Required components:

The UVC LED result tolerance is ± 10 %



SEOUL SEMICONDUCTOR

LED CUD7GF1A
FWHM / FWTM 13.0° / 40.0°
Efficiency 57 %
LEDs/each optic 1
Light colour UV-C
Required components:

The UVC LED result tolerance is ± 10 %



SEOUL SEMICONDUCTOR

LED CUD7GF1B
FWHM / FWTM 19.0° / 43.0°
Efficiency 56 %
LEDs/each optic 1
Light colour UV-C
Required components:

The UVC LED result tolerance is ± 10 %

PHOTOMETRIC DATA (MEASURED):

SEOL SEOUL SEMICONDUCTOR	
LED	CUD7QF1A
FWHM / FWTM	14.0° / 41.0°
Efficiency	54 %
LEDs/each optic	1
Light colour	UV-C
Required components:	
The UVC LED result tolerance is ± 10 %	

SEOL SEOUL SEMICONDUCTOR	
LED	XMD-FBC-LLCA
FWHM / FWTM	17.0° / 47.0°
Efficiency	60 %
LEDs/each optic	1
Light colour	UV-C
Required components:	
The UVC LED result tolerance is ± 10 %	

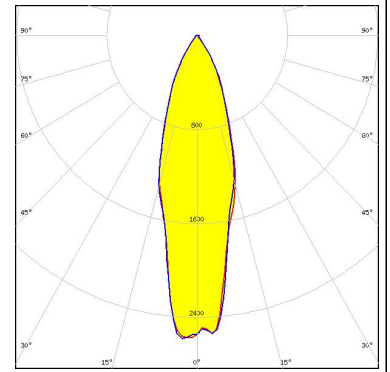
SEOL SEOUL SEMICONDUCTOR	
LED	XMD-FBC-LLOA
FWHM / FWTM	32.0° / 65.0°
Efficiency	58 %
LEDs/each optic	2
Light colour	UV-C
Required components:	
The UVC LED result tolerance is ± 10 %	

SEOL SEOUL SEMICONDUCTOR	
LED	XMD-FBC-LLVA
FWHM / FWTM	45.0° / 70.0°
Efficiency	58 %
LEDs/each optic	4
Light colour	UV-C
Required components:	
The UVC LED result tolerance is ± 10 %	

PHOTOMETRIC DATA (SIMULATED):

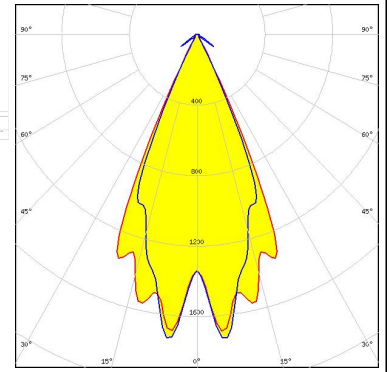
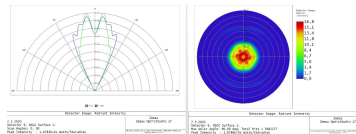
CREE

LED XT-E
 FWHM / FWTM 30.0° / 64.5°
 Efficiency 86 %
 Peak intensity 2.4 cd/lm
 LEDs/each optic 1
 Light colour White
 Required components:



LITEON

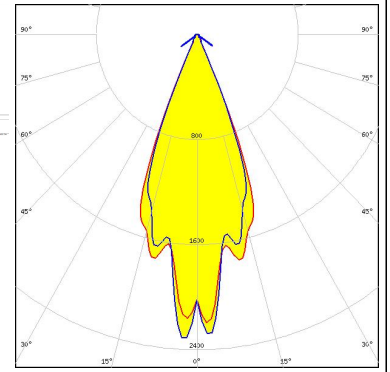
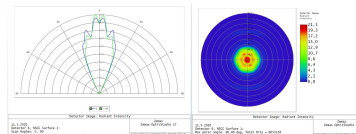
LED LTPL-G35UV275GC-E
 FWHM / FWTM 46.0° / 57.0°
 Efficiency 72 %
 LEDs/each optic 1
 Light colour UV-C
 Required components:



The UVC LED result tolerance is ± 10 %

LITEON

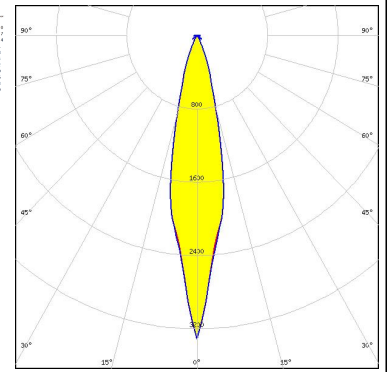
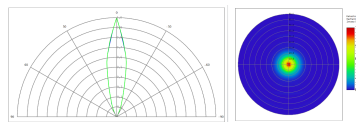
LED LTPL-G35UV275GR-E
 FWHM / FWTM 40.0° / 51.0°
 Efficiency 72 %
 LEDs/each optic 1
 Light colour UV-C
 Required components:



The UVC LED result tolerance is ± 10 %

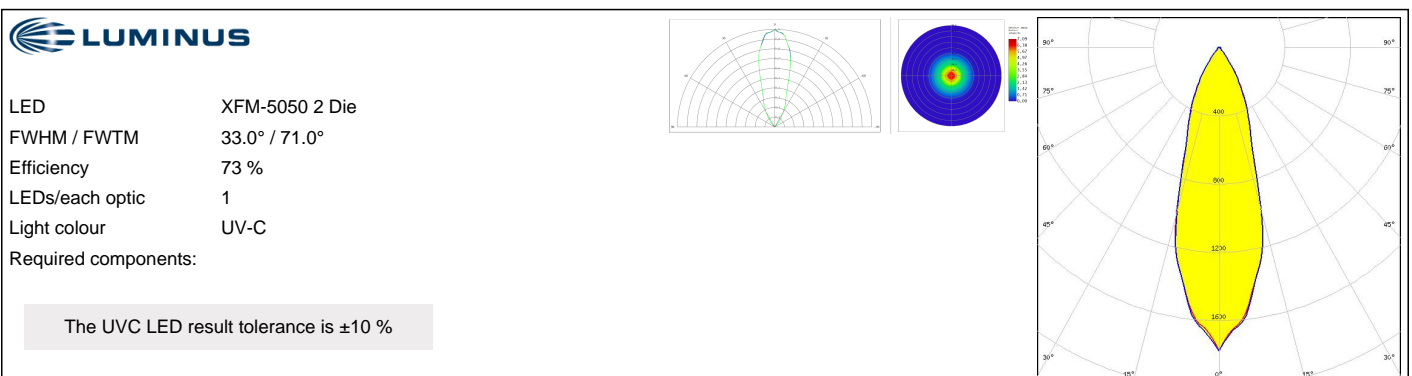
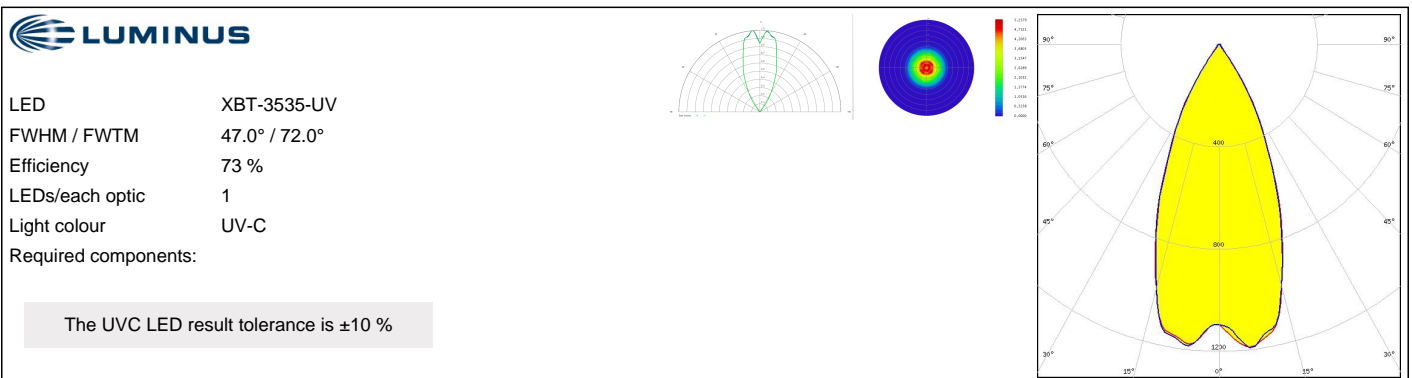
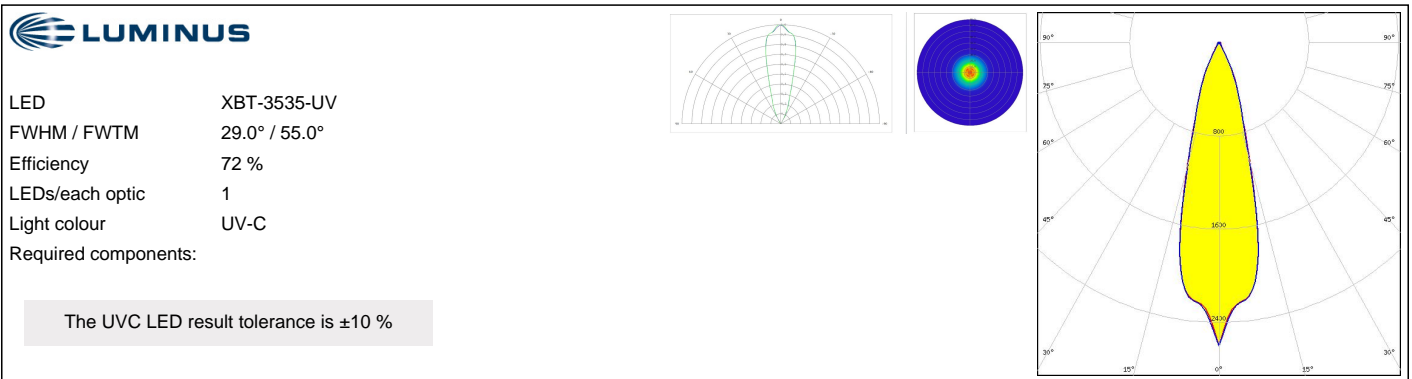
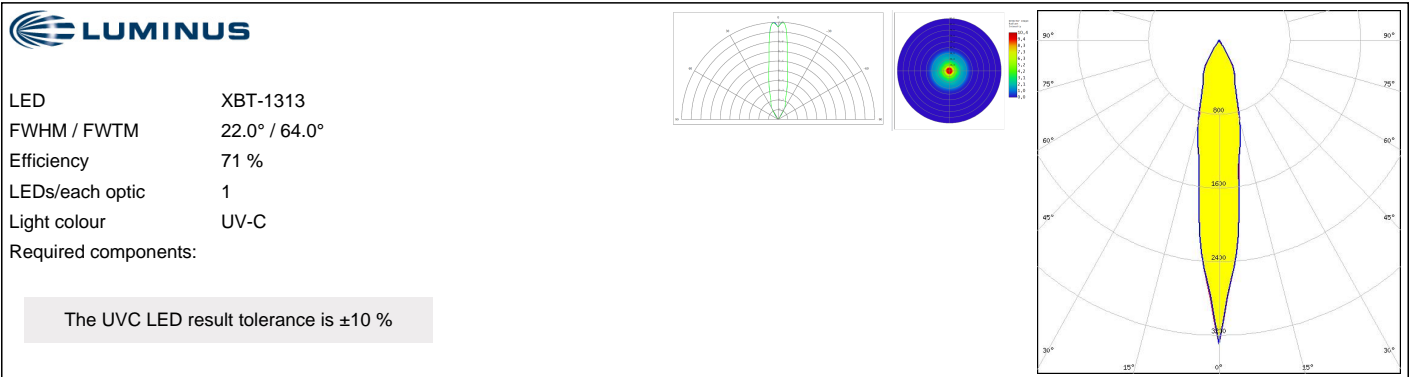
LITEON

LED LTPL-G35UVC275GM
 FWHM / FWTM 22.0° / 44.0°
 Efficiency 66 %
 LEDs/each optic 1
 Light colour UV-C
 Required components:

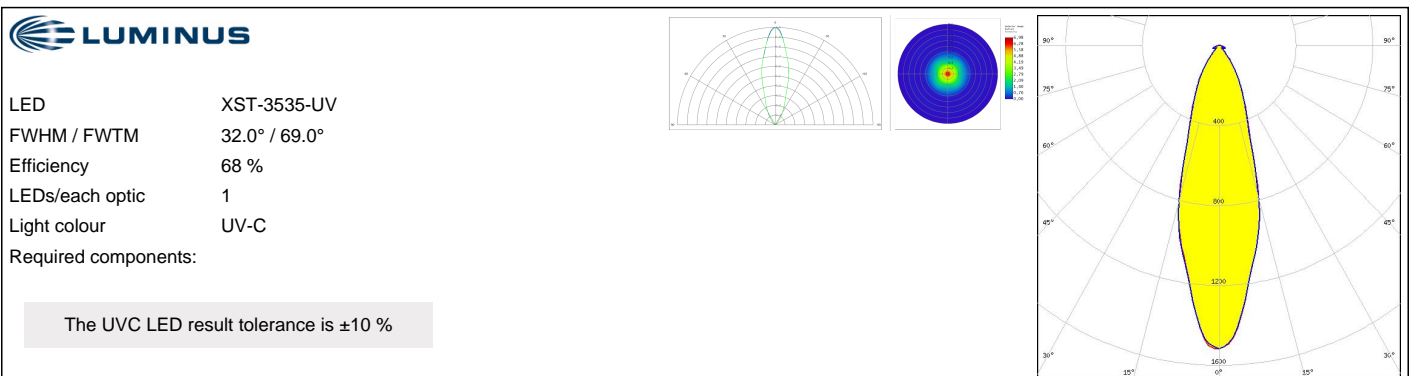
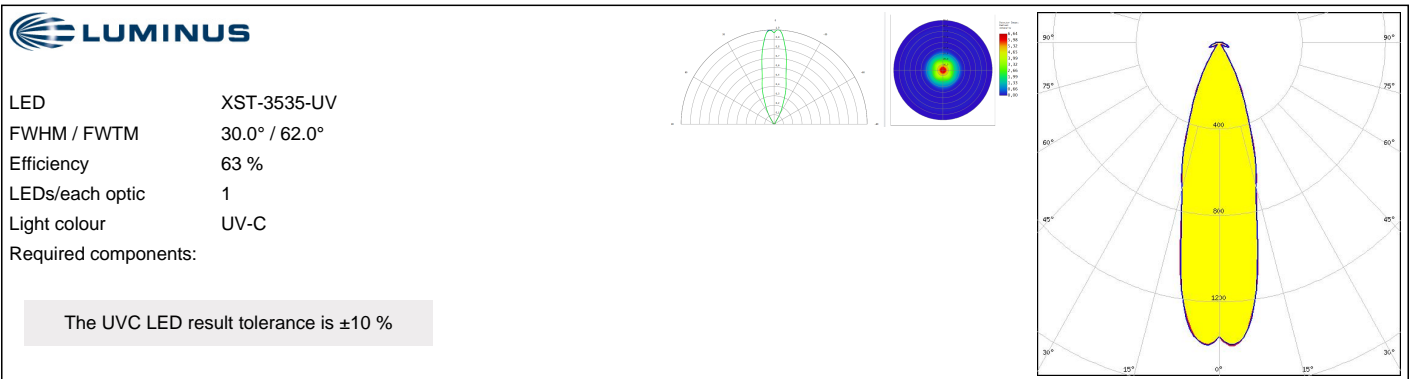
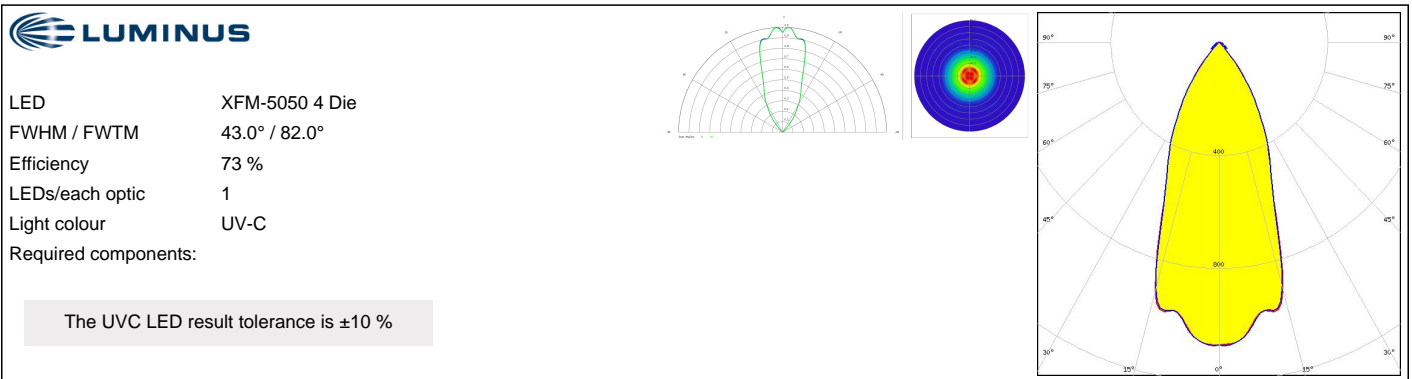
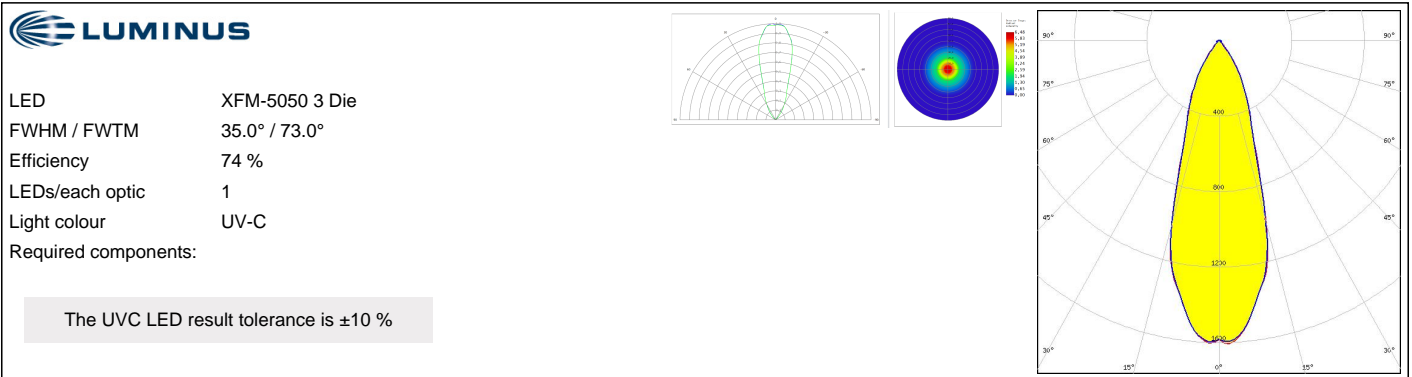


The UVC LED result tolerance is ± 10 %

PHOTOMETRIC DATA (SIMULATED):



PHOTOMETRIC DATA (SIMULATED):



PHOTOMETRIC DATA (SIMULATED):

NICHIA

LED: NCSU334A
 FWHM / FWTM: 40.0° / 68.0°
 Efficiency: 72 %
 LEDs/each optic: 1
 Light colour: UV-C
 Required components:

The UVC LED result tolerance is ±10 %

NICHIA

LED: NCSU334B
 FWHM / FWTM: 39.0° / 68.0°
 Efficiency: 75 %
 LEDs/each optic: 1
 Light colour: UV-C
 Required components:

The UVC LED result tolerance is ±10 %

OSRAM
 Opto Semiconductors

LED: OSOLON UV 3636 (SU CULDN1.VC)
 FWHM / FWTM: 41.0° / 69.0°
 Efficiency: 74 %
 LEDs/each optic: 1
 Light colour: UV-C
 Required components:

The UVC LED result tolerance is ±10 %

OSRAM
 Opto Semiconductors

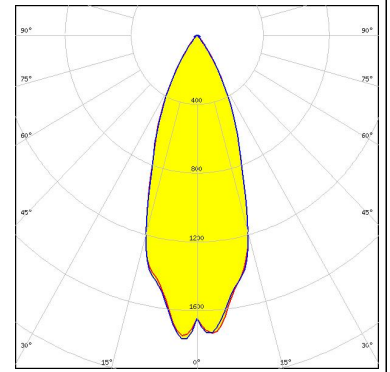
LED: OSOLON UV 6060 (SU CZHPF1.VC)
 FWHM / FWTM: 27.0° / 51.0°
 Efficiency: 64 %
 LEDs/each optic: 1
 Light colour: UV-C
 Required components:

The UVC LED result tolerance is ±10 %

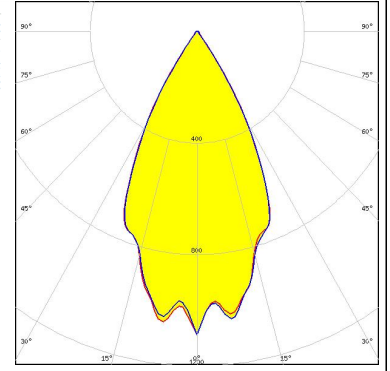
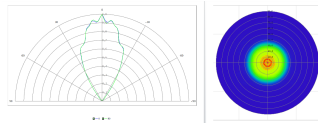
PHOTOMETRIC DATA (SIMULATED):

SAMSUNG

LED LM301B
 FWHM / FWTM 38.0° / 68.0°
 Efficiency 88 %
 Peak intensity 1.8 cd/lm
 LEDs/each optic 1
 Light colour White
 Required components:



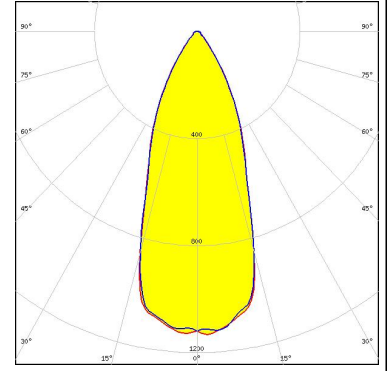
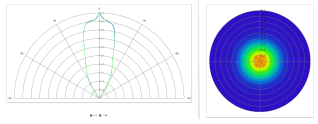
LED CUD7GF1B
 FWHM / FWTM 52.0° / 72.0°
 Efficiency 74 %
 LEDs/each optic 1
 Light colour UV-C
 Required components:



The UVC LED result tolerance is ± 10 %



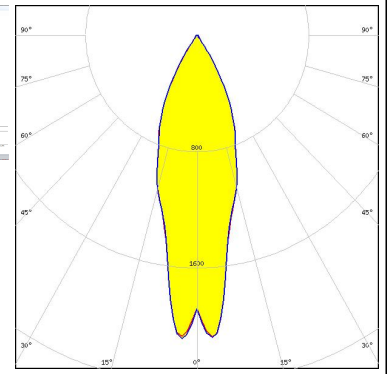
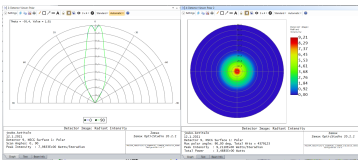
LED CUD8AF4D
 FWHM / FWTM 38.0° / 76.0°
 Efficiency 72 %
 LEDs/each optic 1
 Light colour UV-C
 Required components:



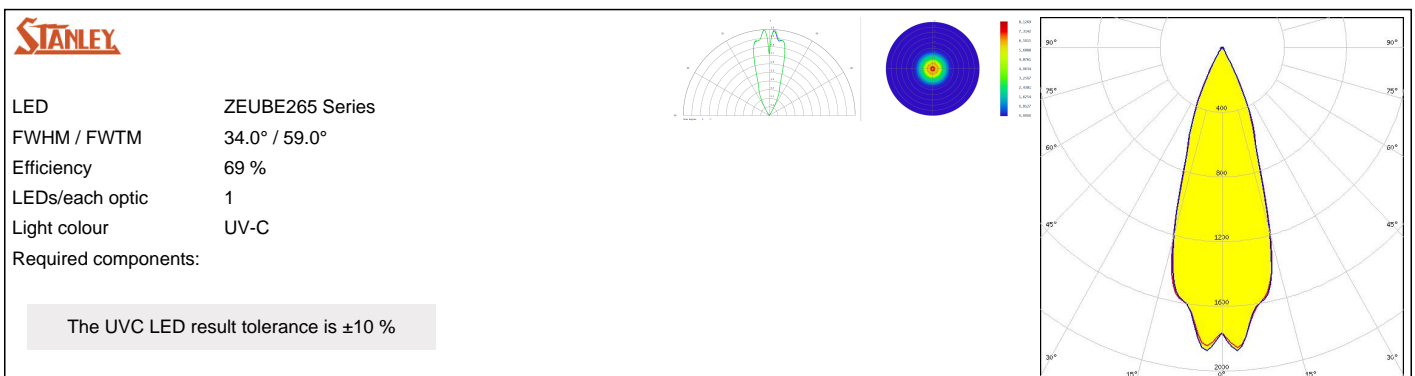
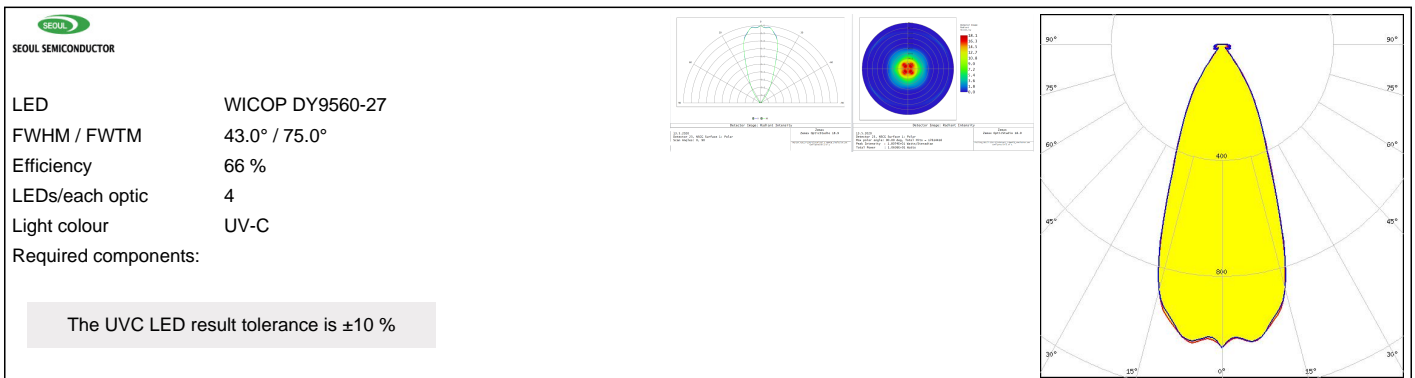
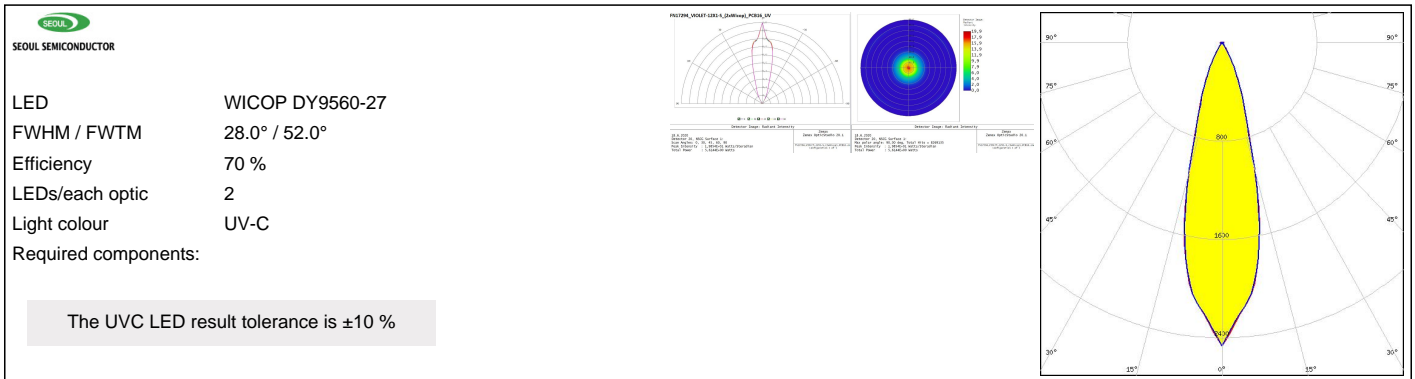
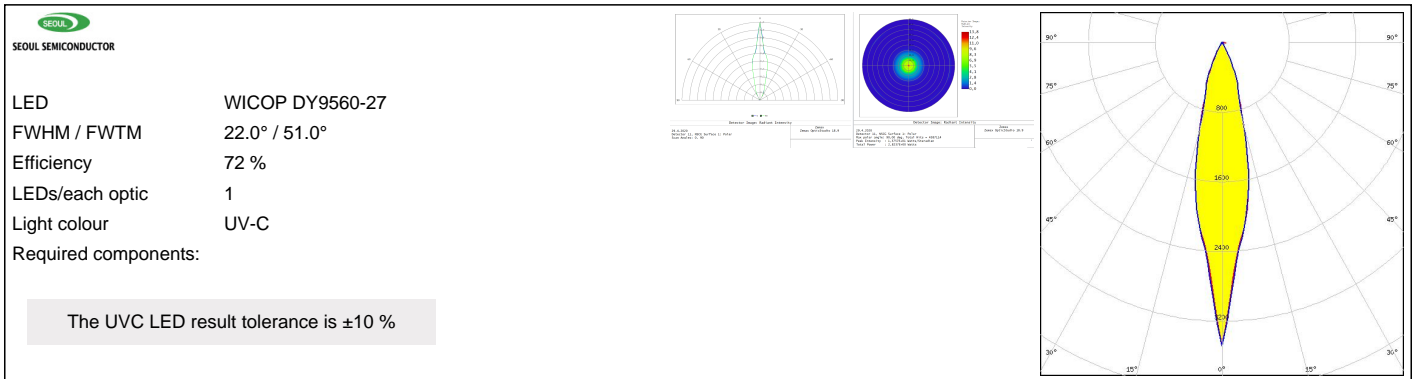
The UVC LED result tolerance is ± 10 %



LED CUN66A1B
 FWHM / FWTM 33.0° / 67.0°
 Efficiency 87 %
 LEDs/each optic 1
 Light colour UV-A
 Required components:



PHOTOMETRIC DATA (SIMULATED):



GENERAL INFORMATION:

NOTE: The typical beam angle will be changed by different color, chip size and chip position tolerance. The typical total beam angle is the full angle measured where the luminous intensity is half of the peak value.

MATERIALS:

As part of our continuous research and improvement processes, and to ensure the best possible quality and availability of our products, LEDiL reserves the right to change material grades without notice.

PRODUCT DATA USER AGREEMENT AND DISCLAIMER:

The measured data in the provided downloadable LEDiL Product Datasheets and Mechanical 2D-Drawings is rounded and provided as reference for planning. LEDiL Oy's optical specifications have been verified by conducting performance testing of the products in accordance with the company's quality system. The reported data are averaged results of multiple measurements with typical variation. LEDiL Oy reserves the right to without prior notification make changes and improvements to its products.

LEDiL Oy assumes neither warranty, nor guarantee nor any other liability of any kind for the contents and correctness of the provided data. The provided data has been generated with highest diligence but the provided data may in reality not represent the complete possible variation range of all intrinsic parameters. Therefore, in certain cases a deviation from the provided data could occur.

LEDiL Oy reserves the right to undertake technical changes of its products without further notification which could lead to changes in the provided data. LEDiL Oy assumes no liability of any kind for the possible deviation from any provided data or any other damage resulting from the usage of the provided data.

The user agrees to this disclaimer and user agreement with the download or usage of the provided files.

LEDiL Oy

Joensuunkatu 13
FI-24240 SALO
Finland

LEDiL Inc.

228 West Page Street
Suite D
Sycamore IL 60178
USA

Ledil Optics Technology (Shenzhen) Co., Ltd.

405 , Block B
Casic Motor Building
Shenzhen 518057
P.R.CHINA

Local sales and technical support

[www.ledil.com/
where_to_buy](http://www.ledil.com/where_to_buy)

Shipping locations

Salo, Finland
Hong Kong, China

Distribution Partners

[www.ledil.com/
where_to_buy](http://www.ledil.com/where_to_buy)