

## SPORT-2X2-S4

Slightly asymmetric ~40° spot beam with minimum spill light

### TECHNICAL SPECIFICATIONS:

Dimensions	50.0 x 50.0 mm
Height	14.4 mm
Fastening	screw
ROHS compliant	yes ⓘ

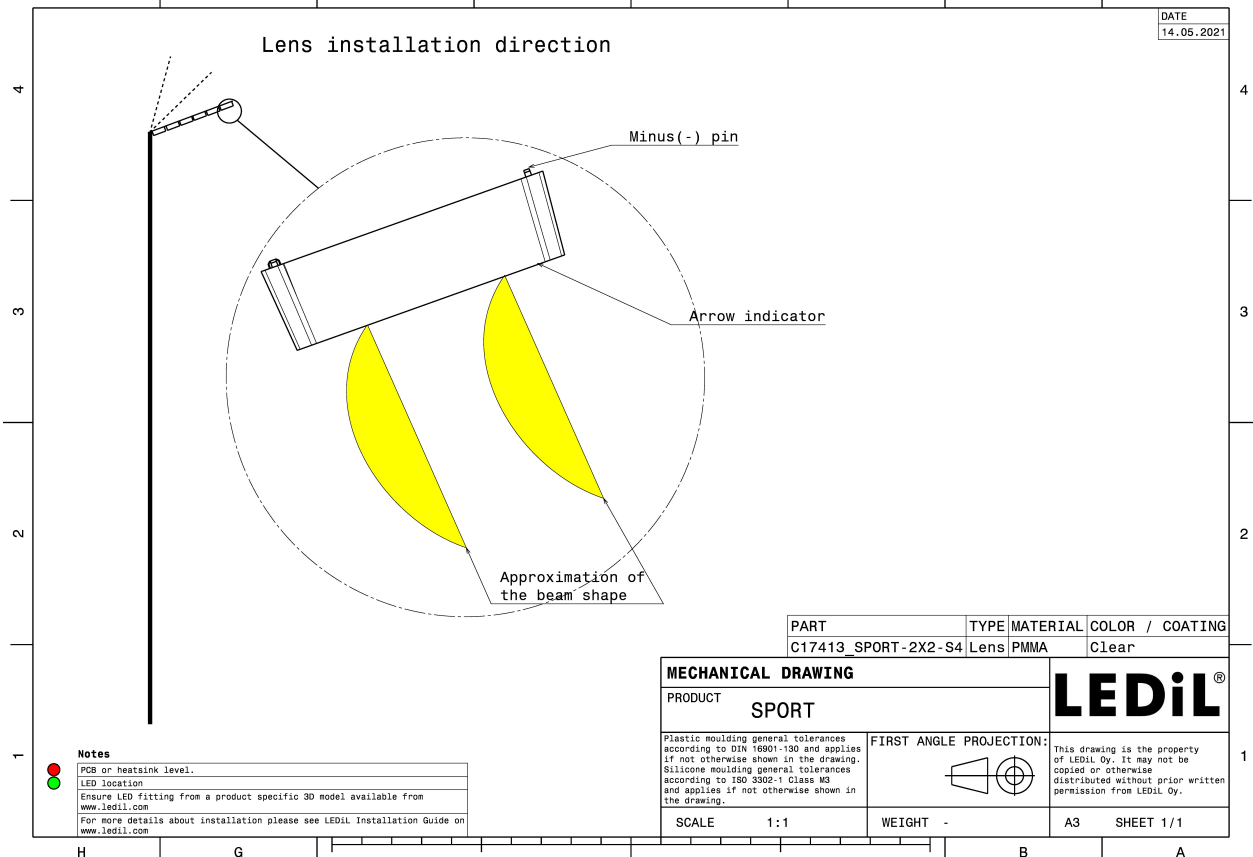
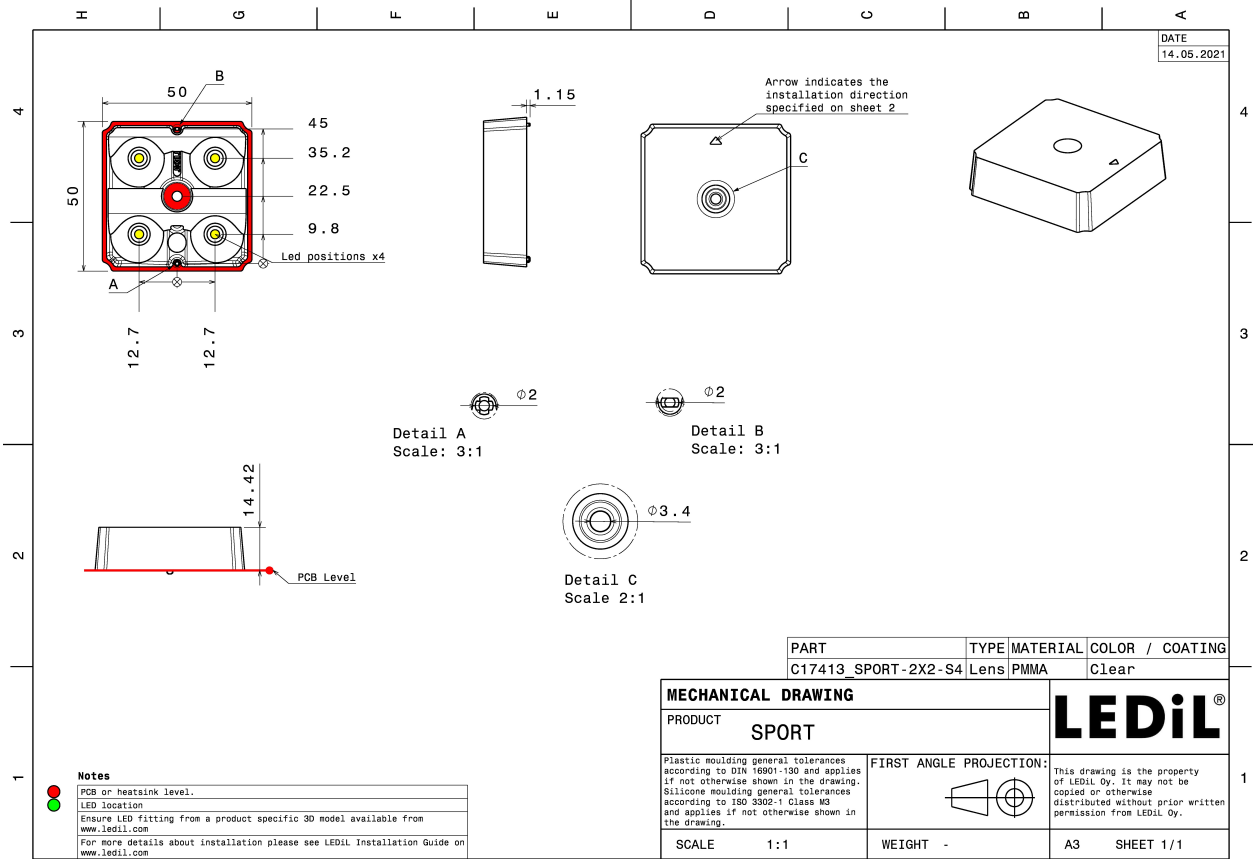


### MATERIAL SPECIFICATIONS:

Component	Type	Material	Colour	Finish
SPORT-2X2-S4	Multi-lens	PMMA	clear	

### ORDERING INFORMATION:

Component	Qty in box	MOQ	MPQ	Box weight (kg)
C17413_SPORT-2X2-S4 » Box size: 480 x 280 x 300 mm	476	140	28	10.2

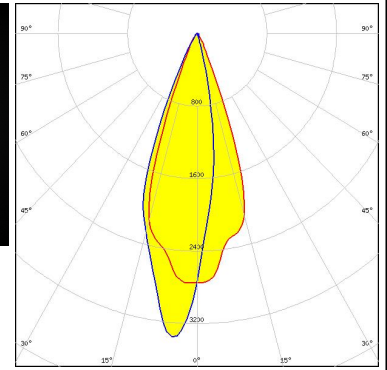
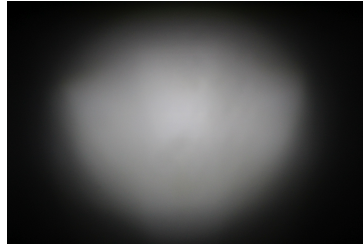


See also our general installation guide: [www.ledil.com/installation\\_guide](http://www.ledil.com/installation_guide)

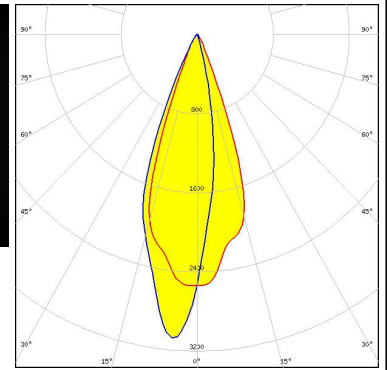
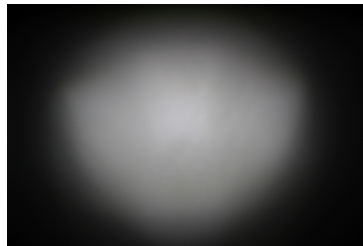
#### PHOTOMETRIC DATA (MEASURED):



LED NV4WB35AM  
 FWHM / FWTM Asymmetric  
 Efficiency 96 %  
 Peak intensity 3.4 cd/lm  
 LEDs/each optic 1  
 Light colour White  
 Required components:



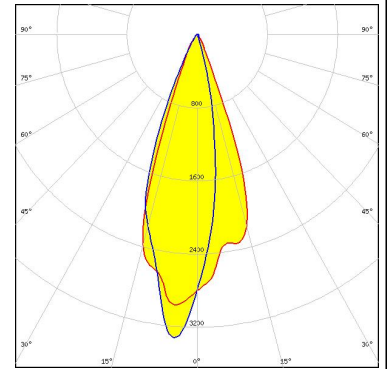
LED NV4WB35AM  
 FWHM / FWTM Asymmetric  
 Efficiency 88 %  
 Peak intensity 3.1 cd/lm  
 LEDs/each optic 1  
 Light colour White  
 Required components:



Protective plate, glass



LED PassivePAQ-R-274x51-NI0-21K-857-5  
 FWHM / FWTM Asymmetric  
 Efficiency 97 %  
 Peak intensity 3.3 cd/lm  
 LEDs/each optic 1  
 Light colour White  
 Required components:



#### PHOTOMETRIC DATA (SIMULATED):

<p><b>CREE</b> LED</p> <p>LED J Series 5050 Round LES</p> <p>FWHM / FWTM Asymmetric</p> <p>Efficiency 97 %</p> <p>Peak intensity 2.8 cd/lm</p> <p>LEDs/each optic 1</p> <p>Light colour White</p> <p>Required components:</p>	
<p><b>CREE</b> LED</p> <p>LED J Series 5050 Round LES</p> <p>FWHM / FWTM Asymmetric</p> <p>Efficiency 92 %</p> <p>Peak intensity 2.7 cd/lm</p> <p>LEDs/each optic 1</p> <p>Light colour White</p> <p>Required components:</p> <p>Protective plate, glass</p>	
<p><b>CREE</b> LED</p> <p>LED XM-L3</p> <p>FWHM / FWTM Asymmetric</p> <p>Efficiency 89 %</p> <p>Peak intensity 2.1 cd/lm</p> <p>LEDs/each optic 1</p> <p>Light colour White</p> <p>Required components:</p> <p>Protective plate, glass</p>	
<p><b>CREE</b> LED</p> <p>LED XM-L3</p> <p>FWHM / FWTM Asymmetric</p> <p>Efficiency 96 %</p> <p>Peak intensity 2.4 cd/lm</p> <p>LEDs/each optic 1</p> <p>Light colour White</p> <p>Required components:</p>	

#### PHOTOMETRIC DATA (SIMULATED):

<p><b>CREE</b> LED</p> <p>LED: XP-G3            FWHM / FWTM: Asymmetric            Efficiency: 91 %            Peak intensity: 2.8 cd/lm            LEDs/each optic: 1            Light colour: White            Required components:            Protective plate, glass</p>	
<p><b>CREE</b> LED</p> <p>LED: XP-L HD            FWHM / FWTM: Asymmetric            Efficiency: 92 %            Peak intensity: 2.5 cd/lm            LEDs/each optic: 1            Light colour: White            Required components:            Protective plate, glass</p>	
<p><b>CREE</b> LED</p> <p>LED: XP-L HD            FWHM / FWTM: Asymmetric            Efficiency: 97 %            Peak intensity: 2.7 cd/lm            LEDs/each optic: 1            Light colour: White            Required components:</p>	
<p><b>CREE</b> LED</p> <p>LED: XP-L HI            FWHM / FWTM: Asymmetric            Efficiency: 97 %            Peak intensity: 3.8 cd/lm            LEDs/each optic: 1            Light colour: White            Required components:</p>	

#### PHOTOMETRIC DATA (SIMULATED):

<p><b>CREE LED</b></p> <p>LED: XP-L HI            FWHM / FWTM: Asymmetric            Efficiency: 92 %            Peak intensity: 3.6 cd/lm            LEDs/each optic: 1            Light colour: White            Required components:</p> <p>Protective plate, glass</p>	
<p><b>CREE LED</b></p> <p>LED: XP-L2            FWHM / FWTM: Asymmetric            Efficiency: 88 %            Peak intensity: 2.1 cd/lm            LEDs/each optic: 1            Light colour: White            Required components:</p> <p>Protective plate, glass</p>	
<p><b>CREE LED</b></p> <p>LED: XP-L2            FWHM / FWTM: Asymmetric            Efficiency: 96 %            Peak intensity: 2.3 cd/lm            LEDs/each optic: 1            Light colour: White            Required components:</p>	
<p><b>LUMILEDS</b></p> <p>LED: LUXEON 5050 HE            FWHM / FWTM: Asymmetric            Efficiency: 89 %            Peak intensity: 2.5 cd/lm            LEDs/each optic: 1            Light colour: White            Required components:</p> <p>Protective plate, glass</p>	

#### PHOTOMETRIC DATA (SIMULATED):

<p><b>LUMILEDS</b></p> <p>LED LUXEON 5050 HE</p> <p>FWHM / FWTM Asymmetric</p> <p>Efficiency 97 %</p> <p>Peak intensity 2.7 cd/lm</p> <p>LEDs/each optic 1</p> <p>Light colour White</p> <p>Required components:</p>	
<p><b>LUMILEDS</b></p> <p>LED LUXEON 5050 Round LES</p> <p>FWHM / FWTM Asymmetric</p> <p>Efficiency 92 %</p> <p>Peak intensity 2.7 cd/lm</p> <p>LEDs/each optic 1</p> <p>Light colour White</p> <p>Required components:</p> <p>Protective plate, glass</p>	
<p><b>LUMILEDS</b></p> <p>LED LUXEON 5050 Square LES</p> <p>FWHM / FWTM Asymmetric</p> <p>Efficiency 92 %</p> <p>Peak intensity 2.7 cd/lm</p> <p>LEDs/each optic 1</p> <p>Light colour White</p> <p>Required components:</p> <p>Protective plate, glass</p>	
<p><b>LUMILEDS</b></p> <p>LED LUXEON 5050 Square LES</p> <p>FWHM / FWTM Asymmetric</p> <p>Efficiency 97 %</p> <p>Peak intensity 2.8 cd/lm</p> <p>LEDs/each optic 1</p> <p>Light colour White</p> <p>Required components:</p>	



#### PHOTOMETRIC DATA (SIMULATED):

<p><b>LUMILEDS</b></p> <p>LED: LUXEON 7070            FWHM / FWTM: Asymmetric            Efficiency: 96 %            Peak intensity: 1.7 cd/lm            LEDs/each optic: 1            Light colour: White            Required components:</p>	
<p><b>LUMINUS</b></p> <p>LED: SST-70X-WCS            FWHM / FWTM: Asymmetric            Efficiency: 89 %            Peak intensity: 2 cd/lm            LEDs/each optic: 1            Light colour: White            Required components:</p> <p>Protective plate, glass</p>	
<p><b>LUMINUS</b></p> <p>LED: SST-70X-WCS            FWHM / FWTM: Asymmetric            Efficiency: 97 %            Peak intensity: 2.2 cd/lm            LEDs/each optic: 1            Light colour: White            Required components:</p>	
<p><b>NICHIA</b></p> <p>LED: NVSW219F            FWHM / FWTM: Asymmetric            Efficiency: 92 %            Peak intensity: 3.1 cd/lm            LEDs/each optic: 1            Light colour: White            Required components:</p> <p>Protective plate, glass</p>	



#### PHOTOMETRIC DATA (SIMULATED):

<p><b>NICHIA</b></p> <p>LED: NVSW3x9A            FWHM / FWTM: Asymmetric            Efficiency: 91 %            Peak intensity: 2.7 cd/lm            LEDs/each optic: 1            Light colour: White            Required components:</p> <p>Protective plate, glass</p>	
<p><b>NICHIA</b></p> <p>LED: NVSxE21A            FWHM / FWTM: Asymmetric            Efficiency: 89 %            Peak intensity: 4.1 cd/lm            LEDs/each optic: 1            Light colour: White            Required components:</p> <p>Protective plate, glass</p>	
<p><b>OSRAM</b>  <small>Opto Semiconductors</small></p> <p>LED: Duris S8            FWHM / FWTM: Asymmetric            Efficiency: 92 %            Peak intensity: 2.6 cd/lm            LEDs/each optic: 1            Light colour: White            Required components:</p> <p>Protective plate, glass</p>	
<p><b>OSRAM</b>  <small>Opto Semiconductors</small></p> <p>LED: OSCONIQ C 2424            FWHM / FWTM: Asymmetric            Efficiency: 97 %            Peak intensity: 2.9 cd/lm            LEDs/each optic: 4            Light colour: White            Required components:</p>	

#### PHOTOMETRIC DATA (SIMULATED):

<p><b>OSRAM</b> Opto Semiconductors</p> <p>LED                      OSCONIQ P 3737 (3W version)</p> <p>FWHM / FWTM        Asymmetric</p> <p>Efficiency             92 %</p> <p>Peak intensity        2.8 cd/lm</p> <p>LEDs/each optic     1</p> <p>Light colour         White</p> <p>Required components:</p> <p style="background-color: #ADD8E6; padding: 2px; display: inline-block;">Protective plate, glass</p>	
<p><b>OSRAM</b> Opto Semiconductors</p> <p>LED                      OSCONIQ P 3737 Flat</p> <p>FWHM / FWTM        Asymmetric</p> <p>Efficiency             97 %</p> <p>Peak intensity        3.6 cd/lm</p> <p>LEDs/each optic     1</p> <p>Light colour         White</p> <p>Required components:</p>	
<p><b>OSRAM</b> Opto Semiconductors</p> <p>LED                      OSCONIQ S 5050</p> <p>FWHM / FWTM        Asymmetric</p> <p>Efficiency             89 %</p> <p>Peak intensity        2.6 cd/lm</p> <p>LEDs/each optic     1</p> <p>Light colour         White</p> <p>Required components:</p> <p style="background-color: #ADD8E6; padding: 2px; display: inline-block;">Protective plate, glass</p>	
<p><b>OSRAM</b> Opto Semiconductors</p> <p>LED                      OSCONIQ S 5050</p> <p>FWHM / FWTM        Asymmetric</p> <p>Efficiency             97 %</p> <p>Peak intensity        2.8 cd/lm</p> <p>LEDs/each optic     1</p> <p>Light colour         White</p> <p>Required components:</p>	

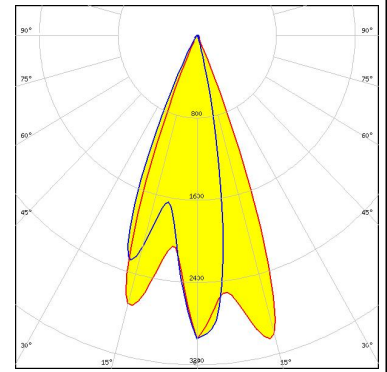
#### PHOTOMETRIC DATA (SIMULATED):

#### OSRAM

Opto Semiconductors

LED OSLON Square CSSRM2/CSSRM3  
 FWHM / FWTM Asymmetric  
 Efficiency 91 %  
 Peak intensity 3.7 cd/lm  
 LEDs/each optic 1  
 Light colour White  
 Required components:

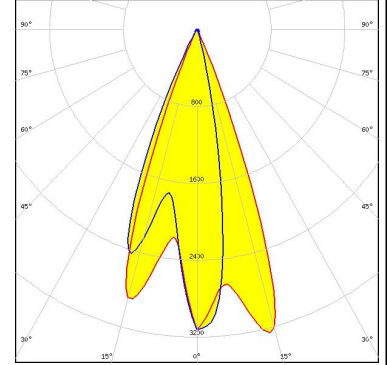
Protective plate, glass



#### OSRAM

Opto Semiconductors

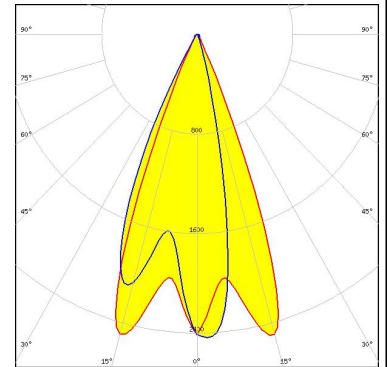
LED OSLON Square CSSRM2/CSSRM3  
 FWHM / FWTM Asymmetric  
 Efficiency 96 %  
 Peak intensity 4 cd/lm  
 LEDs/each optic 1  
 Light colour White  
 Required components:



#### SAMSUNG

LED LH351B  
 FWHM / FWTM Asymmetric  
 Efficiency 92 %  
 Peak intensity 3.1 cd/lm  
 LEDs/each optic 1  
 Light colour White  
 Required components:

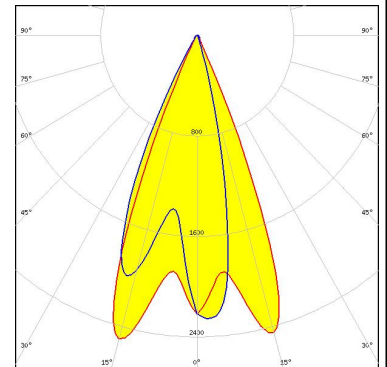
Protective plate, glass



#### SAMSUNG

LED LH351C  
 FWHM / FWTM Asymmetric  
 Efficiency 92 %  
 Peak intensity 3 cd/lm  
 LEDs/each optic 1  
 Light colour White  
 Required components:

Protective plate, glass

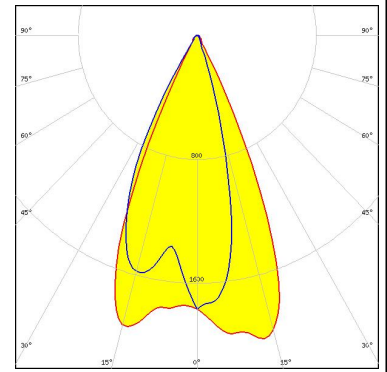


#### PHOTOMETRIC DATA (SIMULATED):

### SAMSUNG

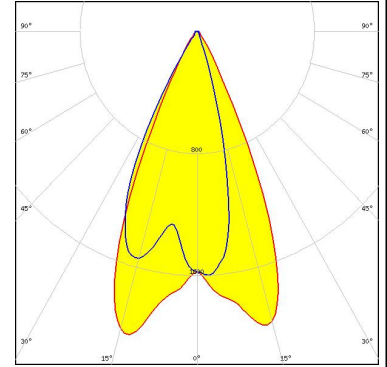
LED LH351D  
 FWHM / FWTM Asymmetric  
 Efficiency 91 %  
 Peak intensity 2.2 cd/lm  
 LEDs/each optic 1  
 Light colour White  
 Required components:

Protective plate, glass



### SAMSUNG

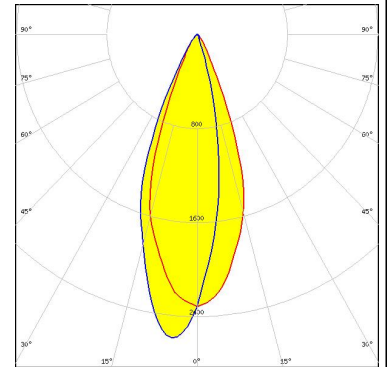
LED LH351D  
 FWHM / FWTM Asymmetric  
 Efficiency 96 %  
 Peak intensity 2.3 cd/lm  
 LEDs/each optic 1  
 Light colour White  
 Required components:



### SAMSUNG

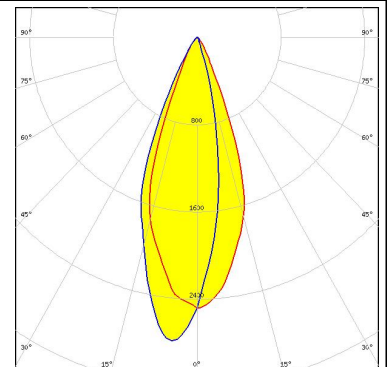
LED LH502C  
 FWHM / FWTM Asymmetric  
 Efficiency 90 %  
 Peak intensity 2.6 cd/lm  
 LEDs/each optic 1  
 Light colour White  
 Required components:

Protective plate, glass


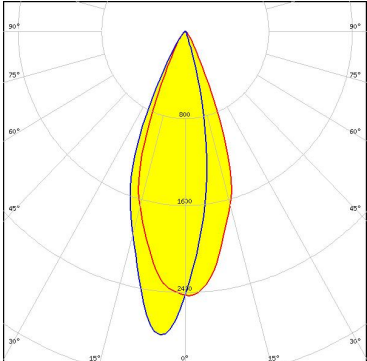

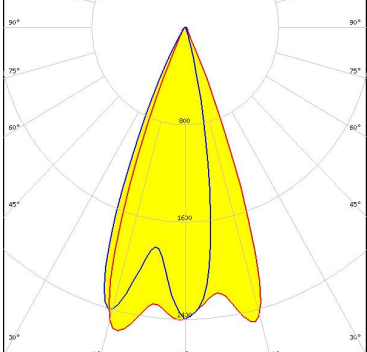


### SAMSUNG

LED LH502C  
 FWHM / FWTM Asymmetric  
 Efficiency 97 %  
 Peak intensity 2.8 cd/lm  
 LEDs/each optic 1  
 Light colour White  
 Required components:



#### PHOTOMETRIC DATA (SIMULATED):

<p> SEOU SEMICONDUCTOR</p> <p>LED: SEOUL DC 5050 6V</p> <p>FWHM / FWTM: Asymmetric</p> <p>Efficiency: 97 %</p> <p>Peak intensity: 2.8 cd/lm</p> <p>LEDs/each optic: 1</p> <p>Light colour: White</p> <p>Required components:</p>	
<p> SEOU SEMICONDUCTOR</p> <p>LED: Z5M3</p> <p>FWHM / FWTM: Asymmetric</p> <p>Efficiency: 91 %</p> <p>Peak intensity: 3.1 cd/lm</p> <p>LEDs/each optic: 1</p> <p>Light colour: White</p> <p>Required components:</p> <p style="background-color: #ADD8E6; padding: 2px; display: inline-block;">Protective plate, glass</p>	

### GENERAL INFORMATION:

NOTE: The typical beam angle will be changed by different color, chip size and chip position tolerance. The typical total beam angle is the full angle measured where the luminous intensity is half of the peak value.

### MATERIALS:

As part of our continuous research and improvement processes, and to ensure the best possible quality and availability of our products, LEDiL reserves the right to change material grades without notice.

### PRODUCT DATA USER AGREEMENT AND DISCLAIMER:

The measured data in the provided downloadable LEDiL Product Datasheets and Mechanical 2D-Drawings is rounded and provided as reference for planning. LEDiL Oy's optical specifications have been verified by conducting performance testing of the products in accordance with the company's quality system. The reported data are averaged results of multiple measurements with typical variation. LEDiL Oy reserves the right to without prior notification make changes and improvements to its products.

LEDiL Oy assumes neither warranty, nor guarantee nor any other liability of any kind for the contents and correctness of the provided data. The provided data has been generated with highest diligence but the provided data may in reality not represent the complete possible variation range of all intrinsic parameters. Therefore, in certain cases a deviation from the provided data could occur.

LEDiL Oy reserves the right to undertake technical changes of its products without further notification which could lead to changes in the provided data. LEDiL Oy assumes no liability of any kind for the possible deviation from any provided data or any other damage resulting from the usage of the provided data.

The user agrees to this disclaimer and user agreement with the download or usage of the provided files.

#### LEDiL Oy

Joensuunkatu 13  
FI-24240 SALO  
Finland

#### LEDiL Inc.

228 West Page Street  
Suite D  
Sycamore IL 60178  
USA

#### Ledil Optics Technology (Shenzhen) Co., Ltd.

# 405 , Block B  
Casic Motor Building  
Shenzhen 518057  
P.R.CHINA

#### Local sales and technical support

[www.ledil.com/  
where\\_to\\_buy](http://www.ledil.com/where_to_buy)

#### Shipping locations

Salo, Finland  
Hong Kong, China

#### Distribution Partners

[www.ledil.com/  
where\\_to\\_buy](http://www.ledil.com/where_to_buy)