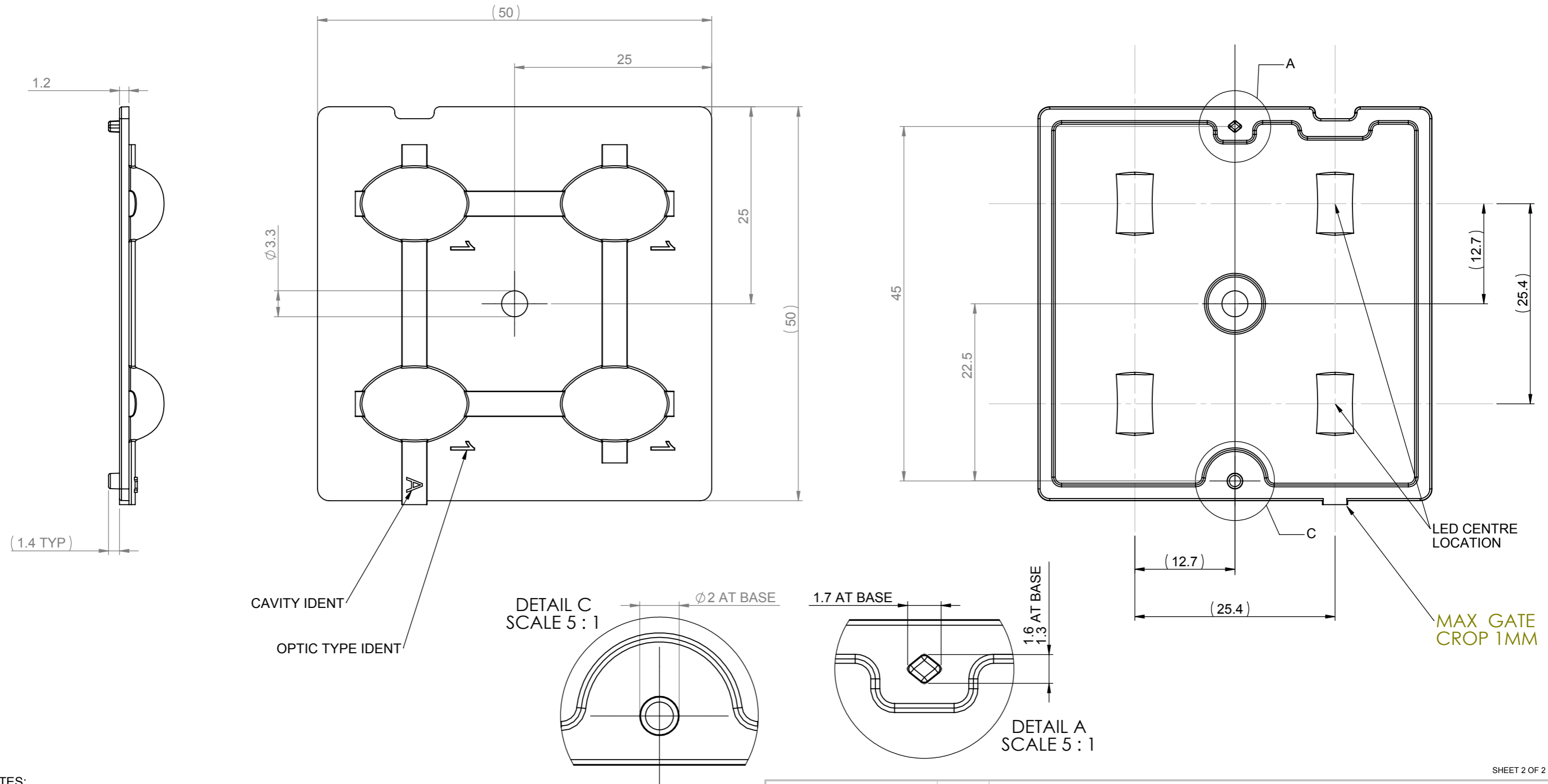


CUSTOMER DRAWING

REVISIONS					
REV.	D.C.N NUMBER	DESCRIPTION	DATE	CHECKED BY DATE	APPROVED BY DATE
1	1367	FIRST PRODUCTION PART -B.B	04/02/2014	P.S 04/02/2014	A.C 18/02/2014
2	1442	OPTIC TYPE & CAVITY IDENTS ADDED. PJS	16/09/2015		



CAVITY IDENT

OPTIC TYPE IDENT

DETAIL C
SCALE 5 : 1
Ø2 AT BASE

1.7 AT BASE
1.6 AT BASE
1.3 AT BASE
DETAIL A
SCALE 5 : 1

LED CENTRE LOCATION

MAX GATE CROP 1MM

- NOTES:
- 1 - MATERIAL: PMMA
 - 2 - FINISH:
OPTICAL SURFACES ARE OPTICALLY POLISHED TO SPI-A1
COMMERCIAL POLISH SPI-A3 FOR ALL NON OPTICAL SURFACES.
 - 3 - GENERAL DRAFT 2°
 - 4 - GENERAL FILLET 0.25MM
 - 5 - DIMENSIONS IN BRACKETS ARE FOR INFORMATION ONLY AND NOT FOR INSPECTION

SHEET 2 OF 2

<p>103 Buckingham Avenue SL1 4PF, UK. Tel: +44(0) 01753 575 011 Fax: +44(0) 01753 811 359 sales@carclo-optics.com www.carclo-optics.com</p>	Title		MINI HUBBLE 1 2 BY 2 ARRAY			
	Drawn by	BB	Customer	CARCLO	Scale	2:1
<p>THIRD ANGLE PROJECTION</p>	GENERAL TOLERANCES UNLESS OTHERWISE STATED		DIMENSION IN mm		Format Size	A3
	<p>LINEAR</p> <p>0 ±0.25 0.0 ±0.1 0.00 ±0.05</p>		<p>ANGULAR</p> <p>0 ±1° 0.0 ±0.5° 0.00 ±0.1°</p>		CAD File	12765_70276_Rev-2
<p>CARCLO Optics</p> <p>CONFIDENTIAL: UNAUTHORISED COPYING, DISCUSSION & DISTRIBUTION PROHIBITED</p>		Part N°	12765	Drw N°	70276	